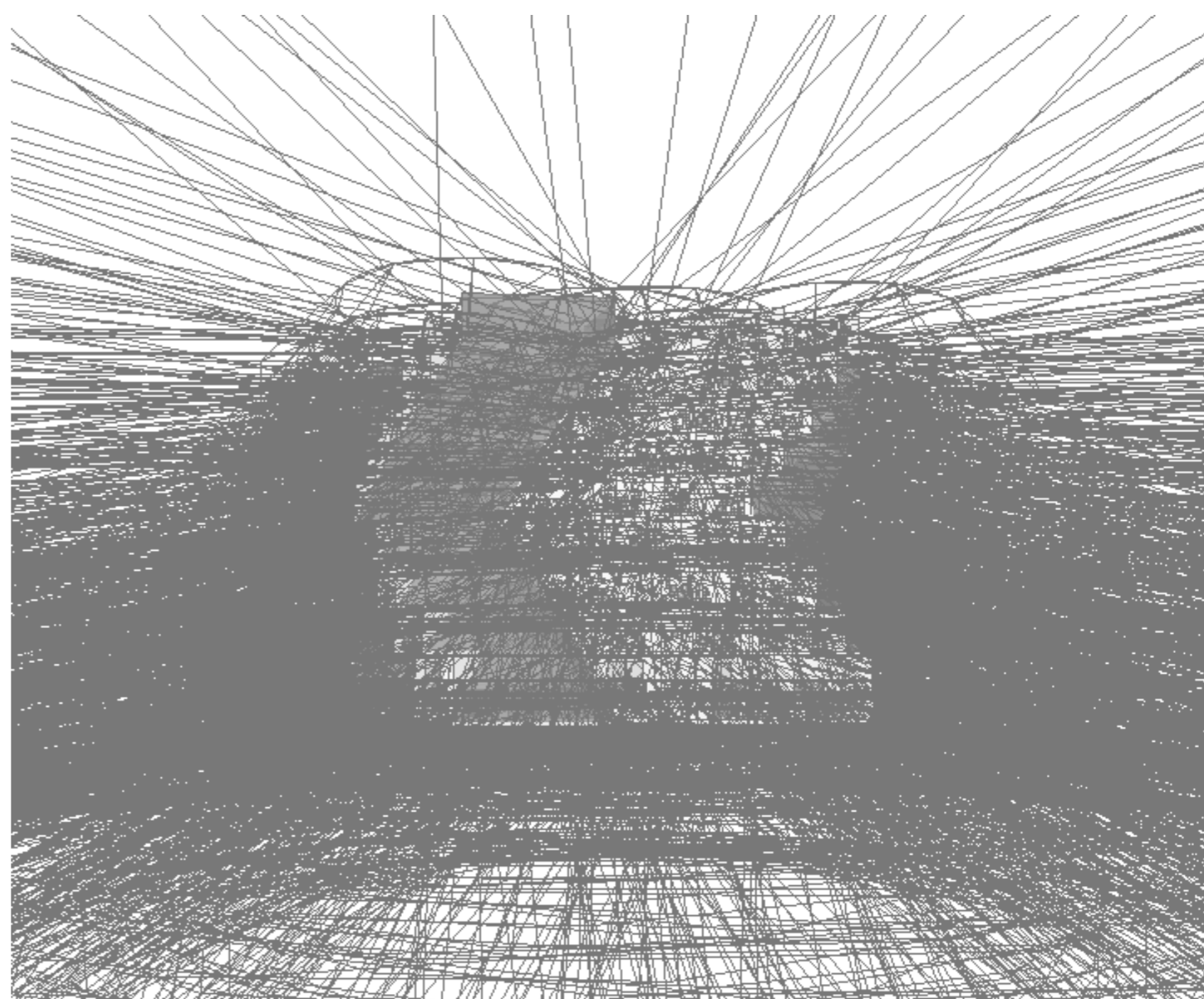


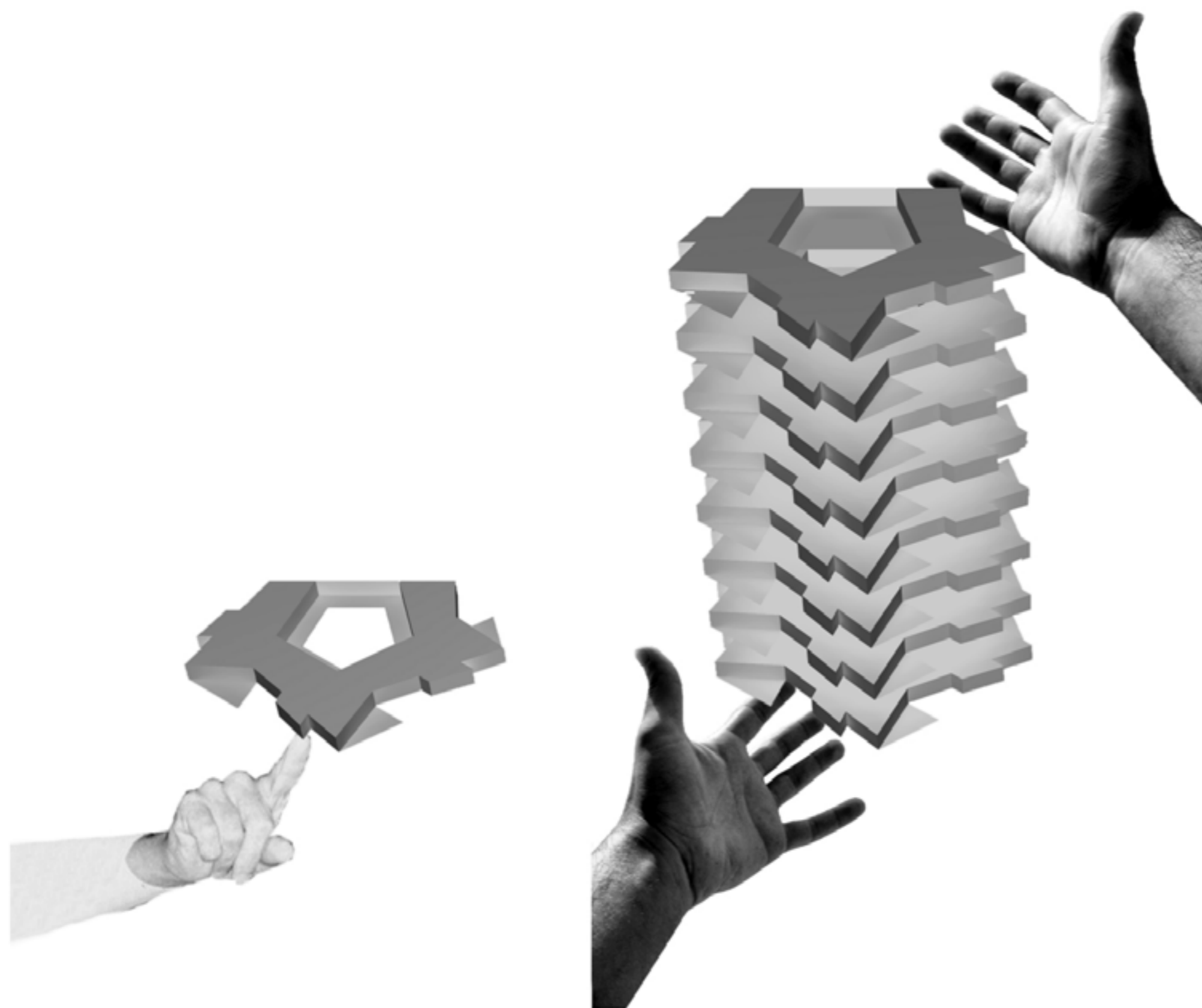
situation. scale 1:5000



### riverdance - ctu students dormitory

reconquering unused abandoned space near the riverside, the new dormitory offers privacy, community, sports, learning and discussion areas, space for arts and other creativity. the northern part of the building is facing the district holešovice head-on. While it is kept in a rather calm manner to reflect this part of the city's architecture you can still feel its movement. the sides facing the river dance with the flowing water. steel cable trellis provide the vault and its balconies with both thrill and safeness. slide tubes connecting the floors inside the vault allow fast communication between floors. the stairs are only an option. each apartment presents itself with river side balconies and living rooms. each angle of view is different, in every apartment on every floor.

the students will refresh, enhance and develop the riverside, which is full of forgotten potentials.

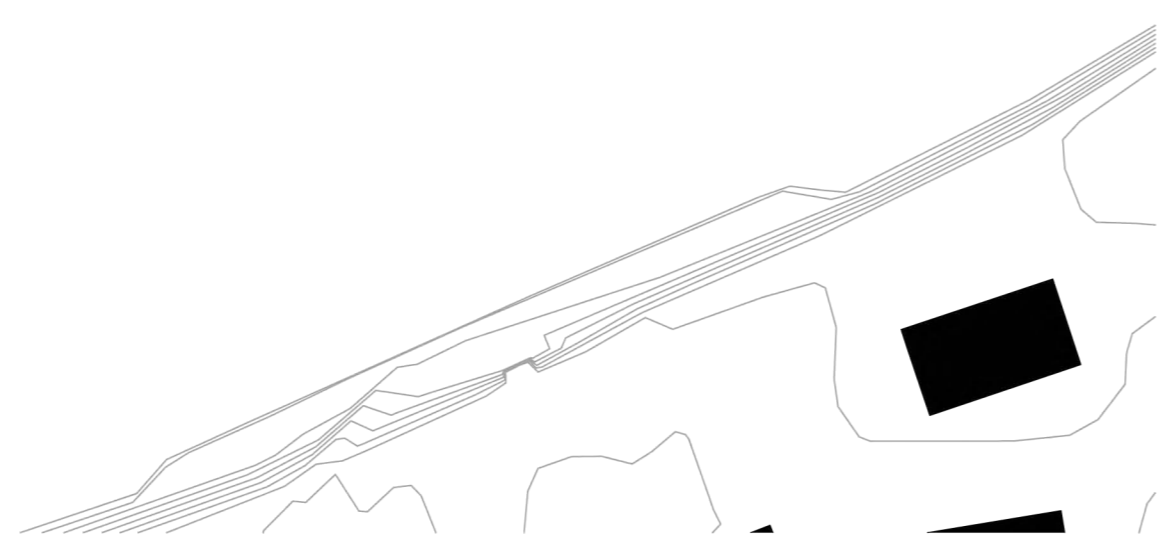


geometrical evolution.



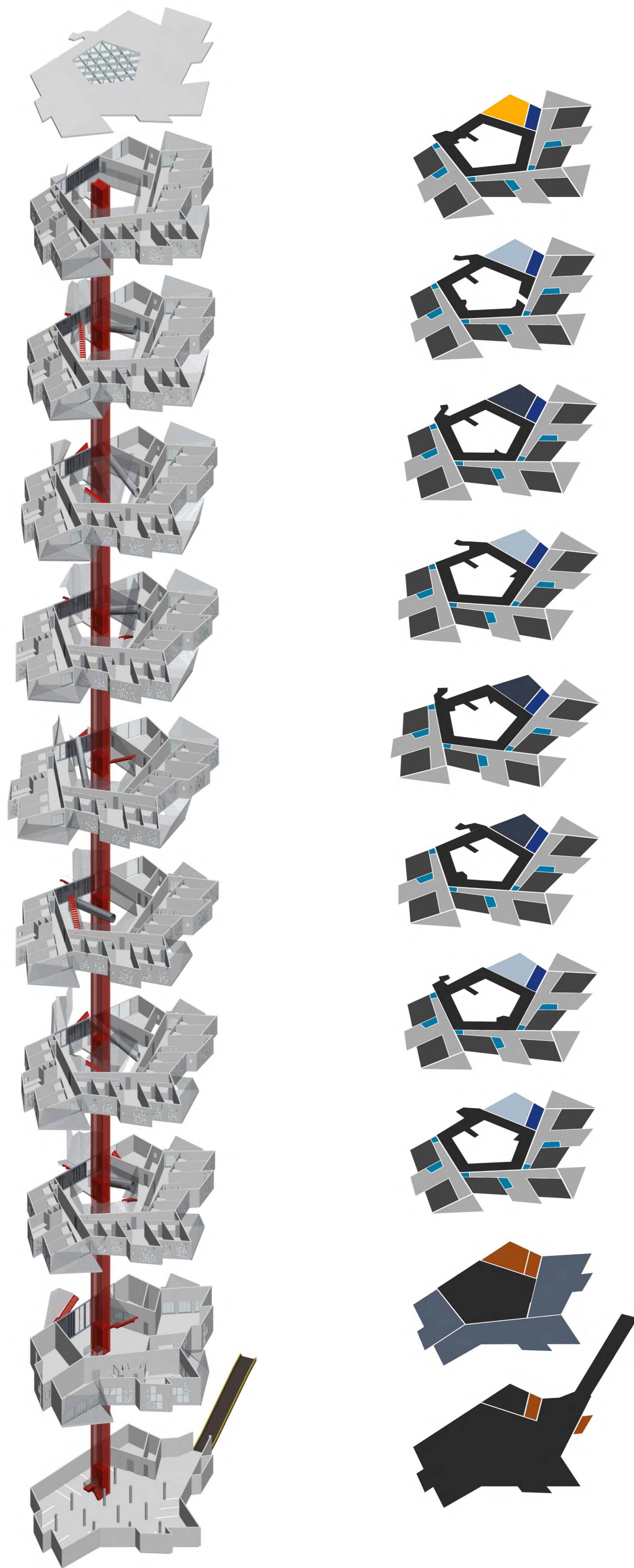
panoramic view. ostrov štvanice





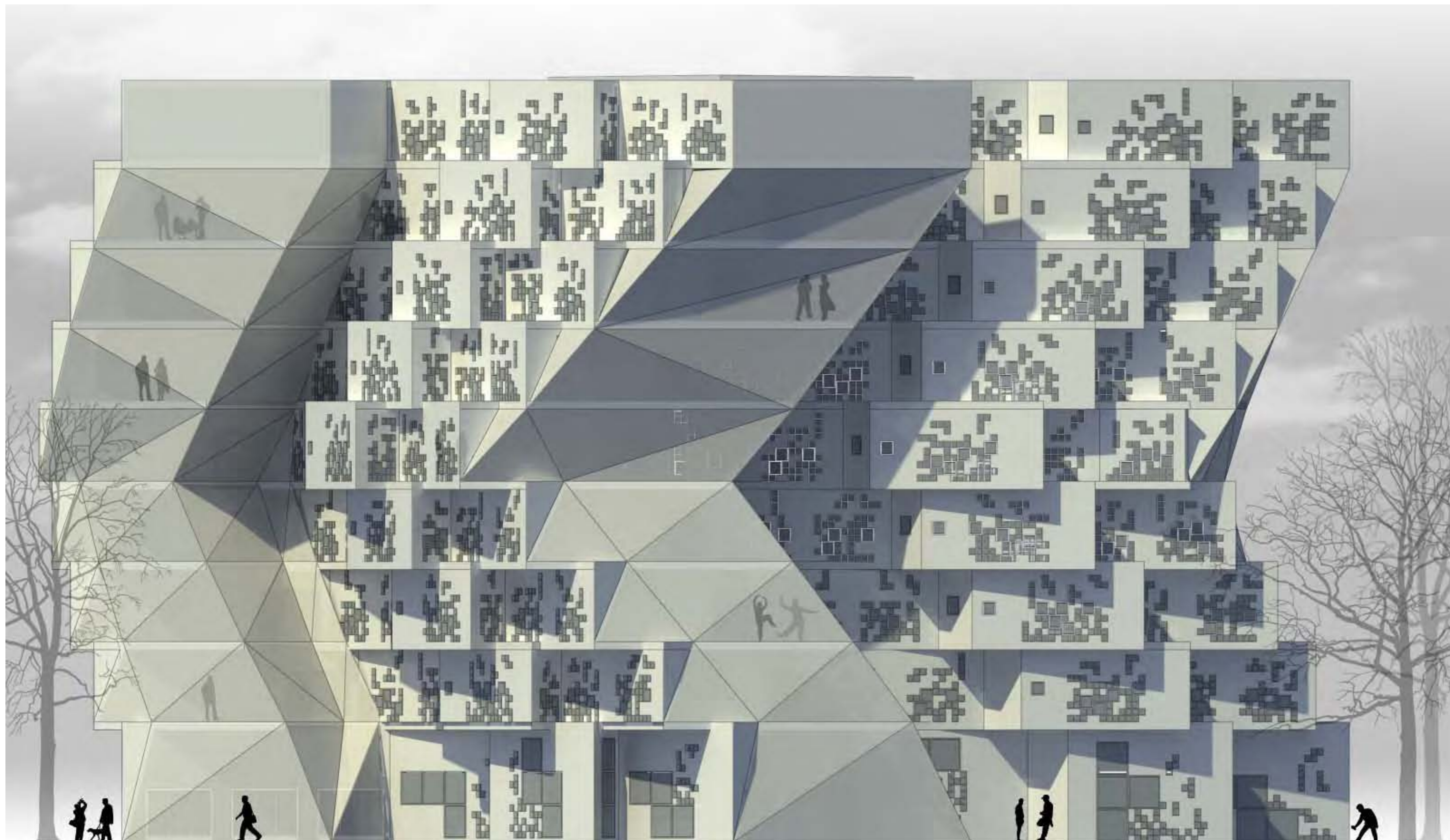
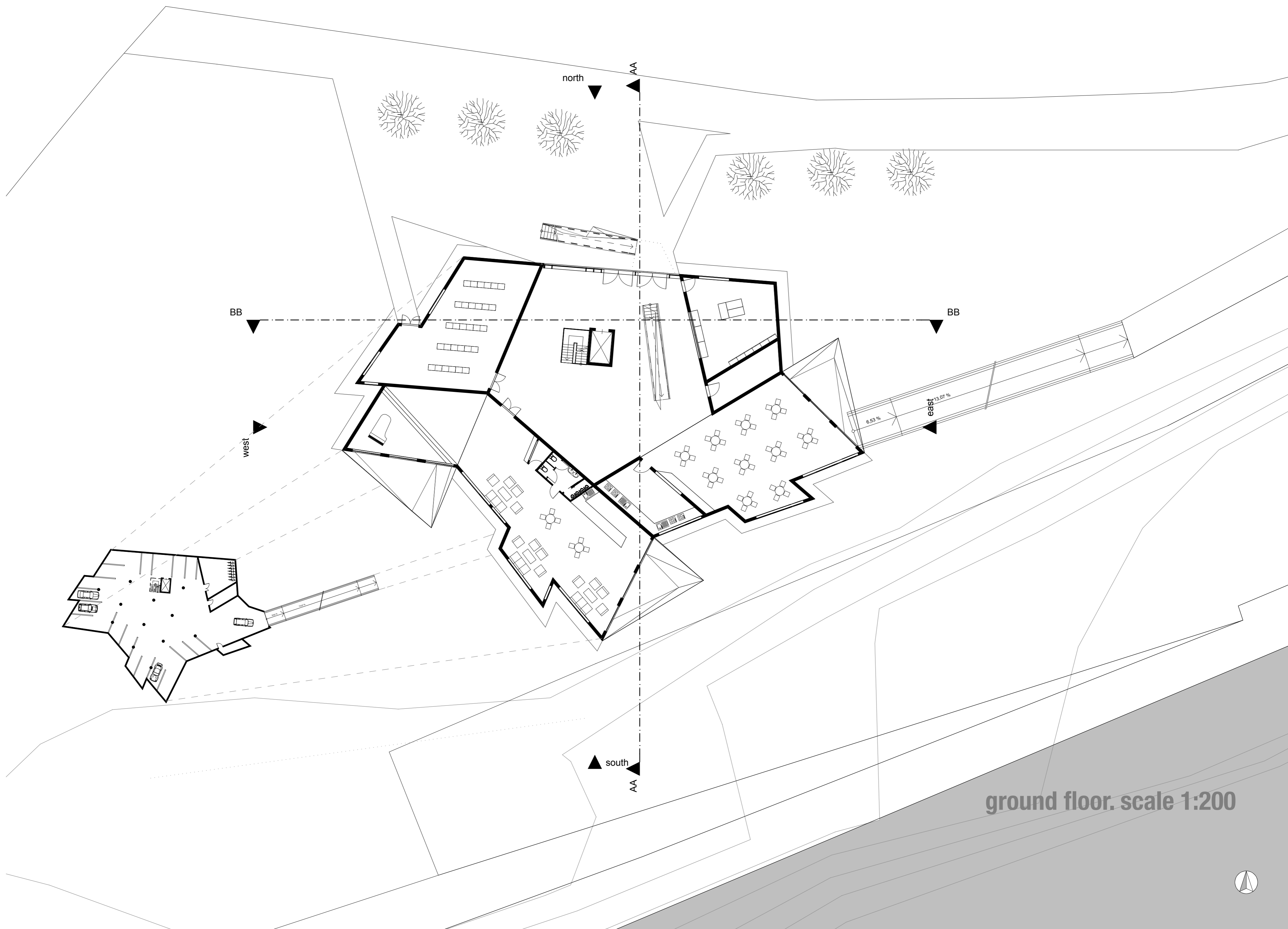
situation. scale 1:2000

- common room.
- private room.
- bath.
- washing. drying.
- art. creativity.
- sports.
- education. community.
- exploitation. parking.
- shop. club. restaurant.
- administration. technic.

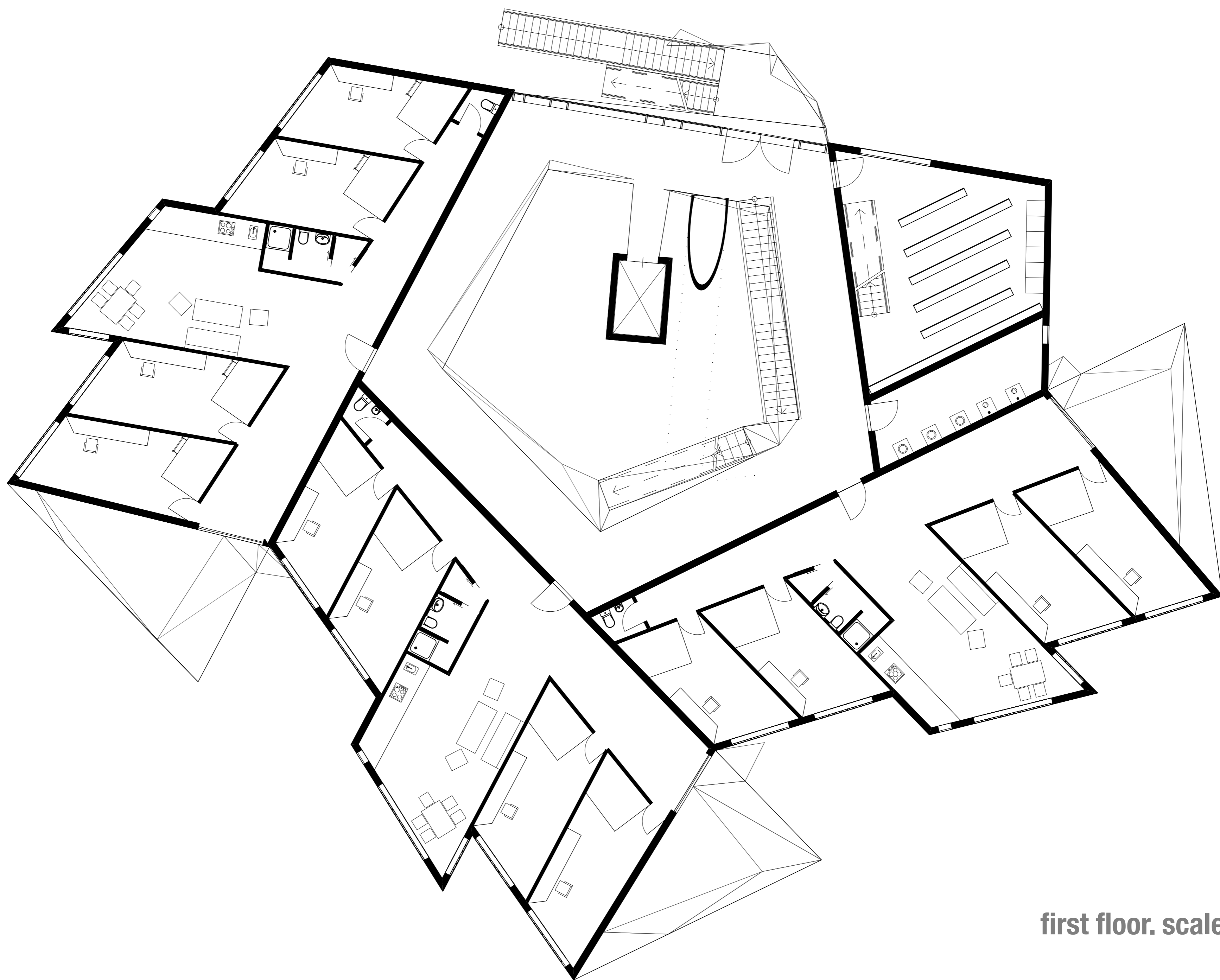


panoramic view. libensky bridge.

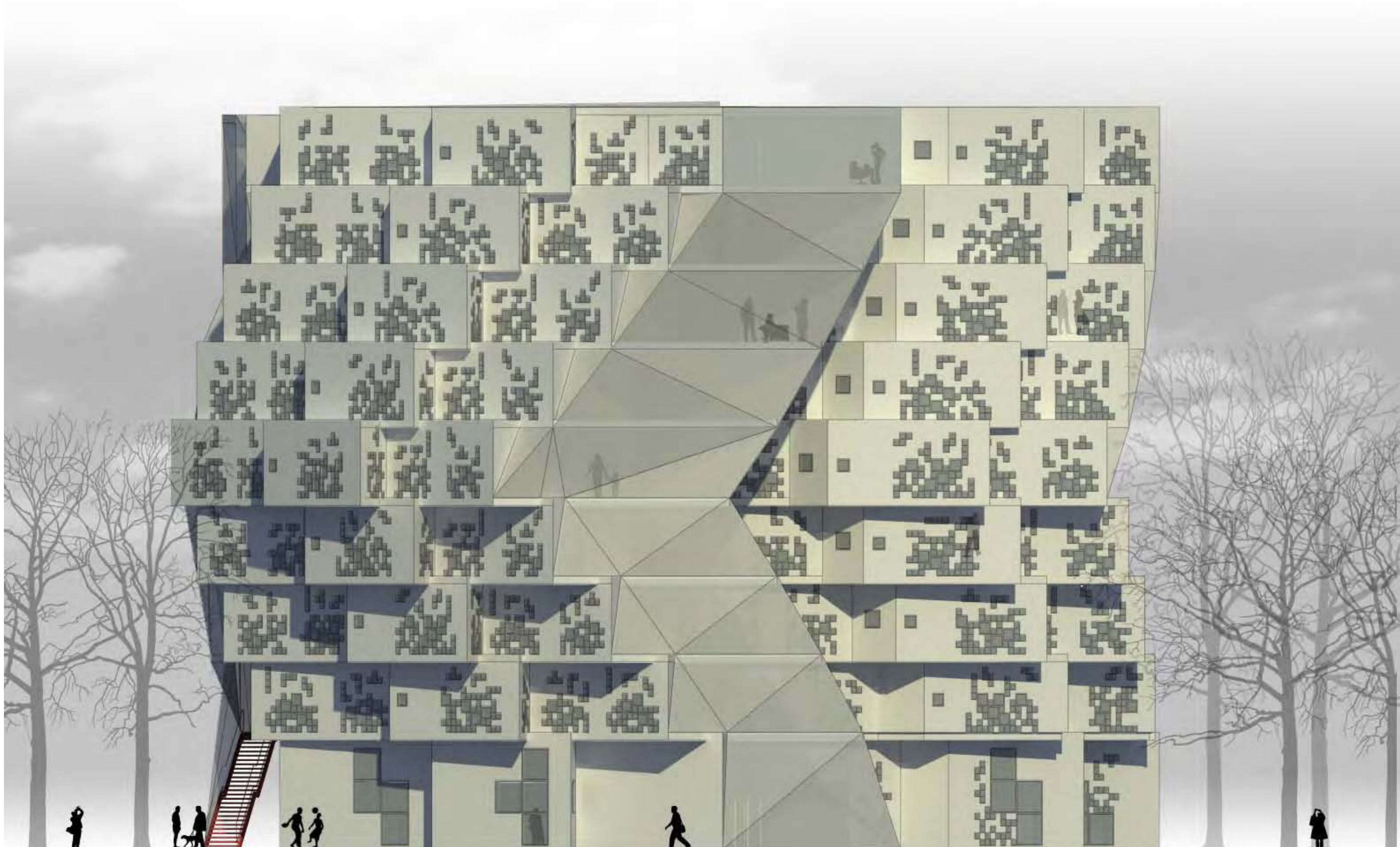






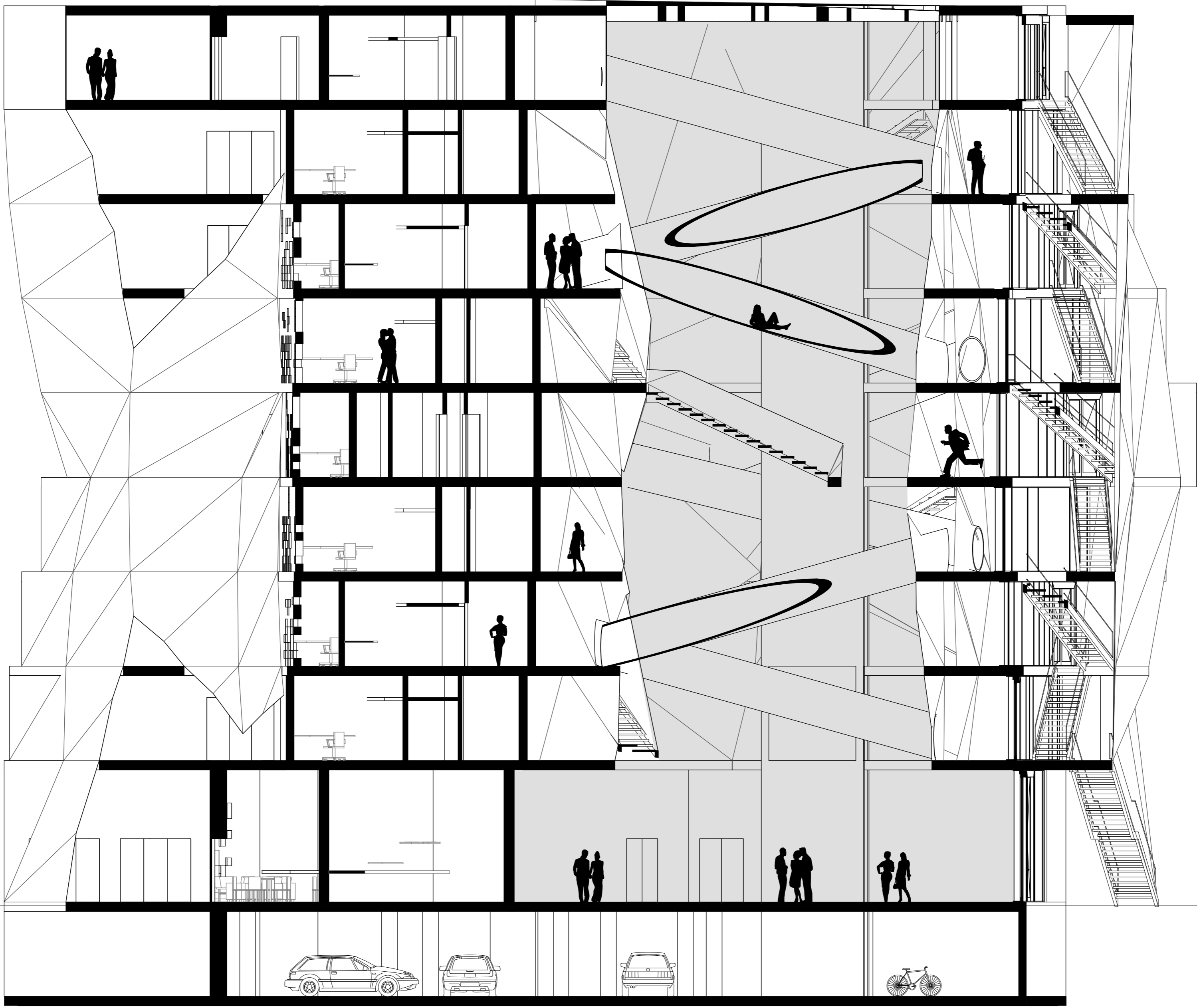


first floor. scale 1:100



west elevation. scale 1:100



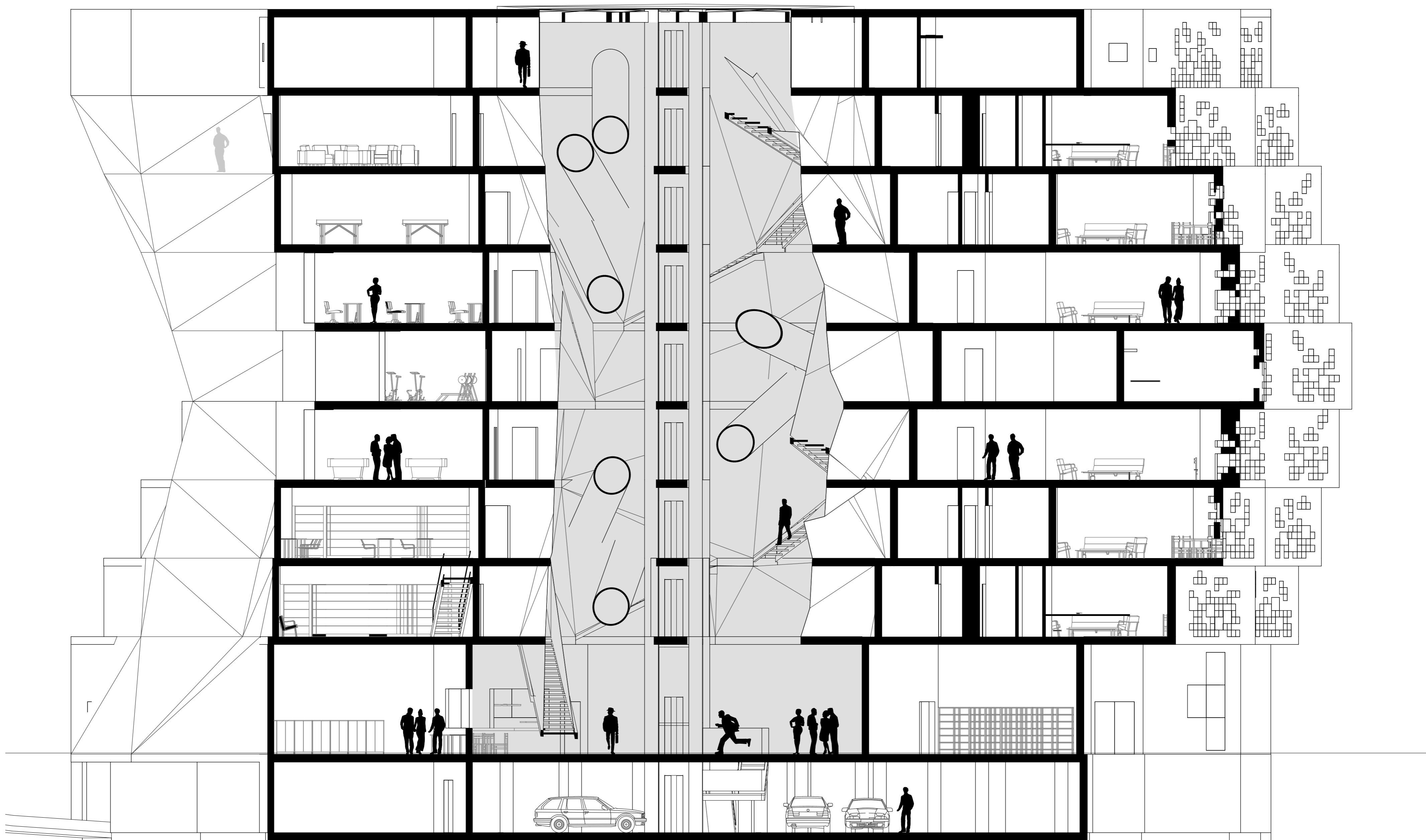


section aa. scale 1:100

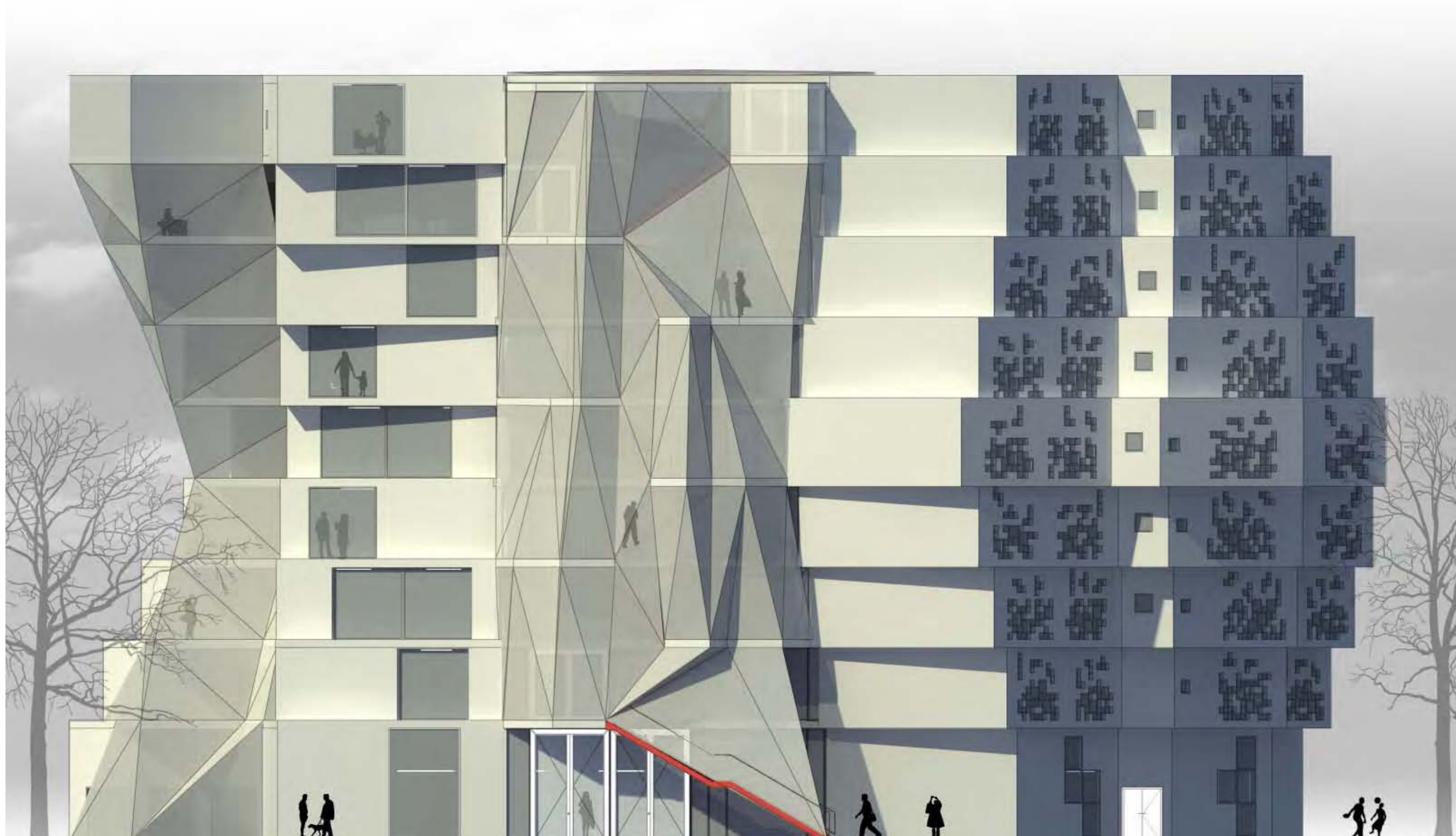


east elevation. scale 1:100



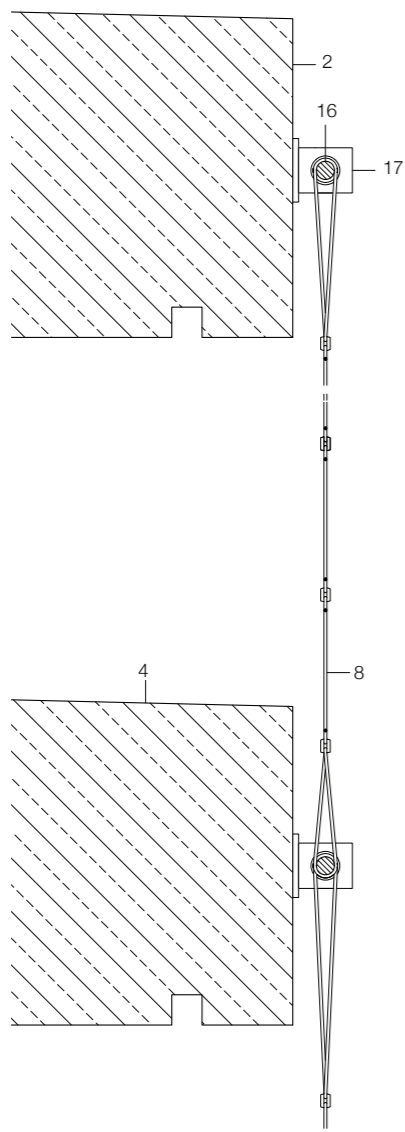


section bb. scale 1:100

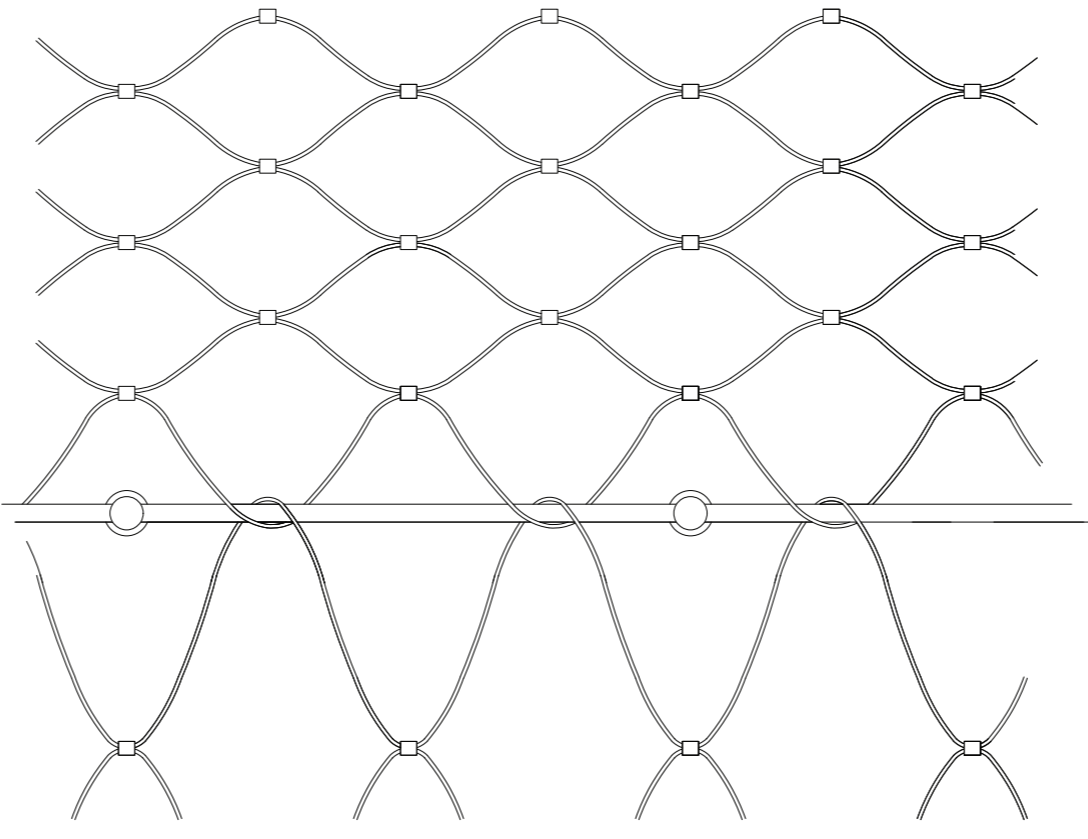


north elevation. scale 1:100

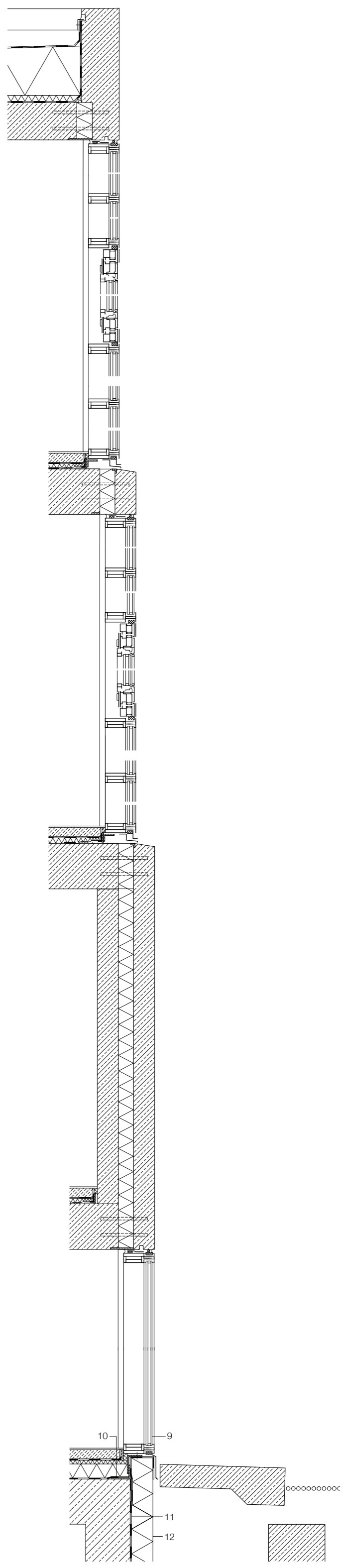




section details. vault. scale 1:20

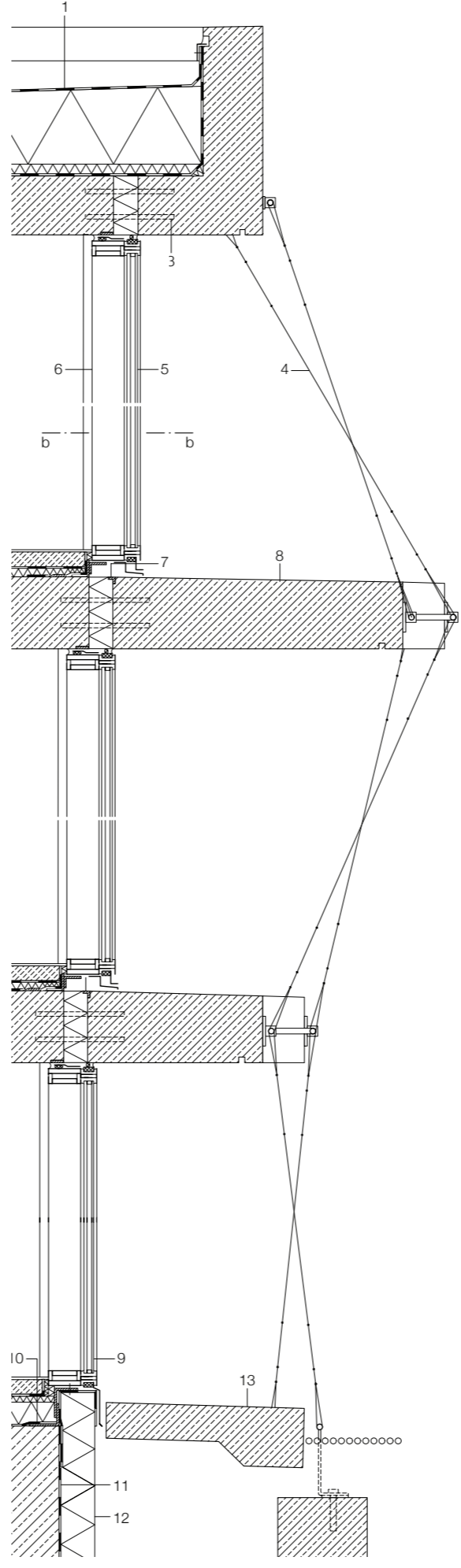


elevation detail. trellis. scale 1:2

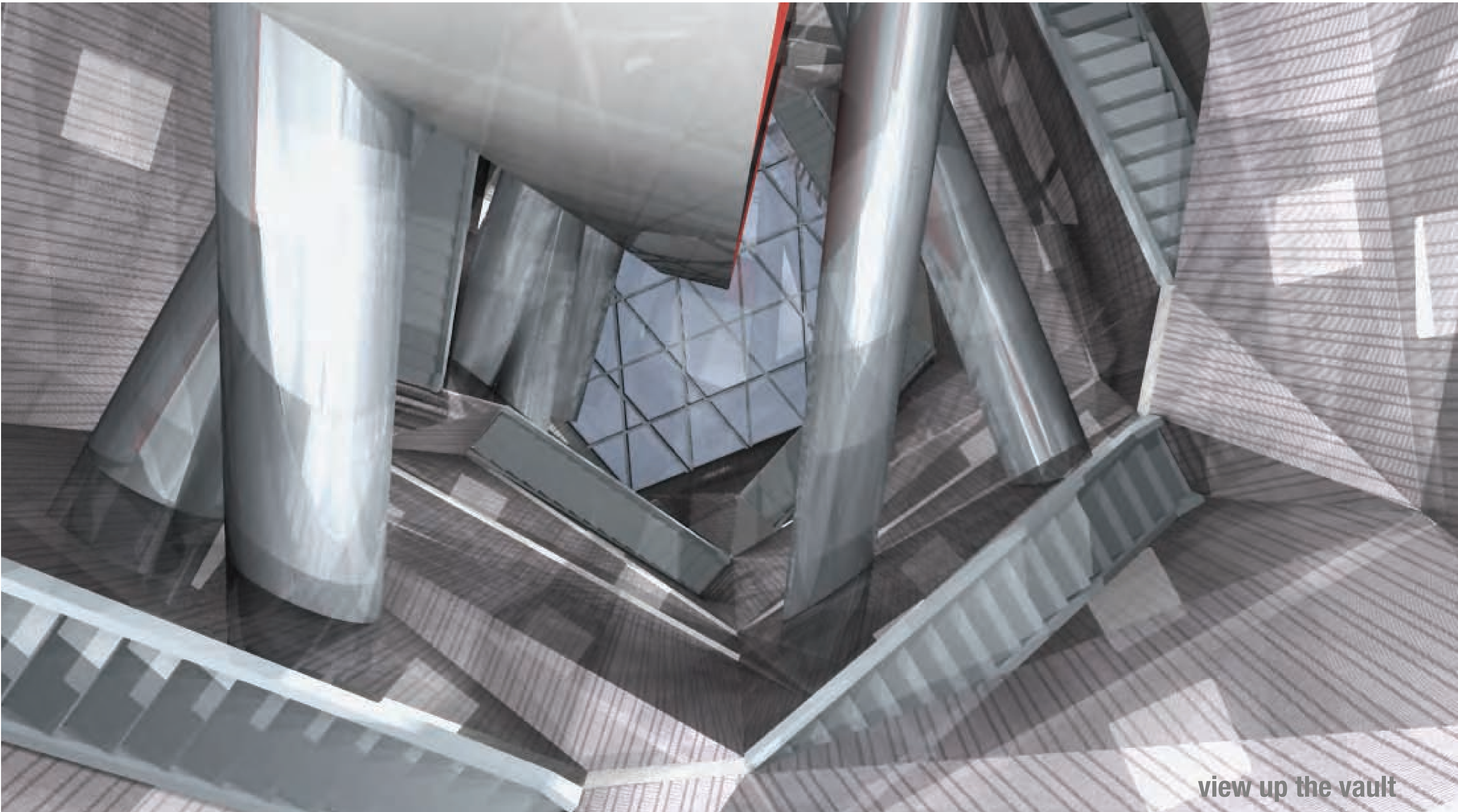


section details. elevation. scale 1:20

- 1 roof construction:  
2 mm single-layer plastic roof seal  
200 mm rigid-foam thermal insulation  
vapour barrier  
200 mm reinforced concrete roof slab
- 2 access balcony cover slab:  
210-240 mm precast concrete element
- 3 thermally insulated reinforcement  
stitching bars
- 4 trellis as safety barrier:  
Ø 3 mm stainless-steel cable
- 5 double glazing:  
8 + 12 mm oat glass + 16 mm cavity
- 6 post-and-rail facade with xed glazing
- 7 30/20/4 mm galvanized steel angle inserted in  
precast concrete element
- 8 210-240 mm precast concrete access balcony,  
sandblasted on top surface
- 9 double glazing:  
6 + 10 mm oat glass + 16 mm cavity
- 10 100/75/7 mm galvanized steel angle
- 11 perimeter sealing layer
- 12 120 mm rigid-foam thermal insulation
- 13 200 mm precast concrete access-strip  
slabs 370/1450 mm
- 14 110/50 mm aluminium section
- 15 thermally insulated door element;  
frame clad with 3 mm aluminium sheeting
- 16 Ø 12 mm stainless-steel edge cable
- 17 stainless-steel anchor piece
- 18 Ø 16 mm stainless-steel eye xi



section details. balcony. scale 1:20



view up the vault



